



Registered Pension Plans: Reengineering Update

John C. O'Meara, CGA

More Ways to Serve You!
Pour vous servir encore mieux!



Canada Revenue
Agency

Agence du revenu
du Canada

Canada

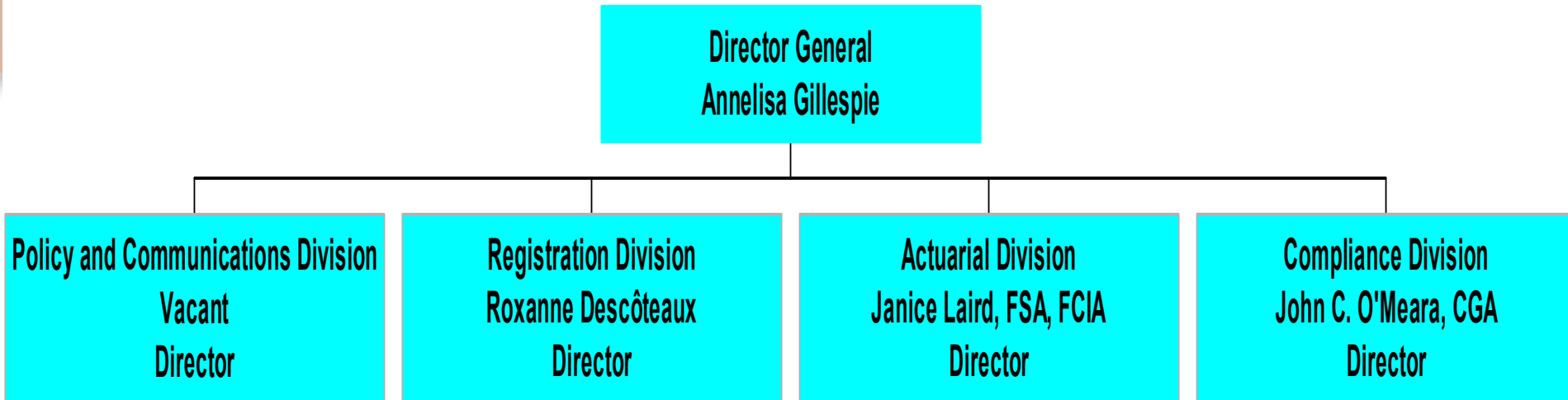
Outline

- **Background**
 - Role of RPD
 - Compliance / Service Model
 - Volumetric charts
- **Program Overview - Pre-reengineered Program**
- **Reengineered Program - Update**
 - Registration and Amendments - Change in focus
 - Increasing audit presence
 - Expanding outreach and communication
 - Administrator responsibilities

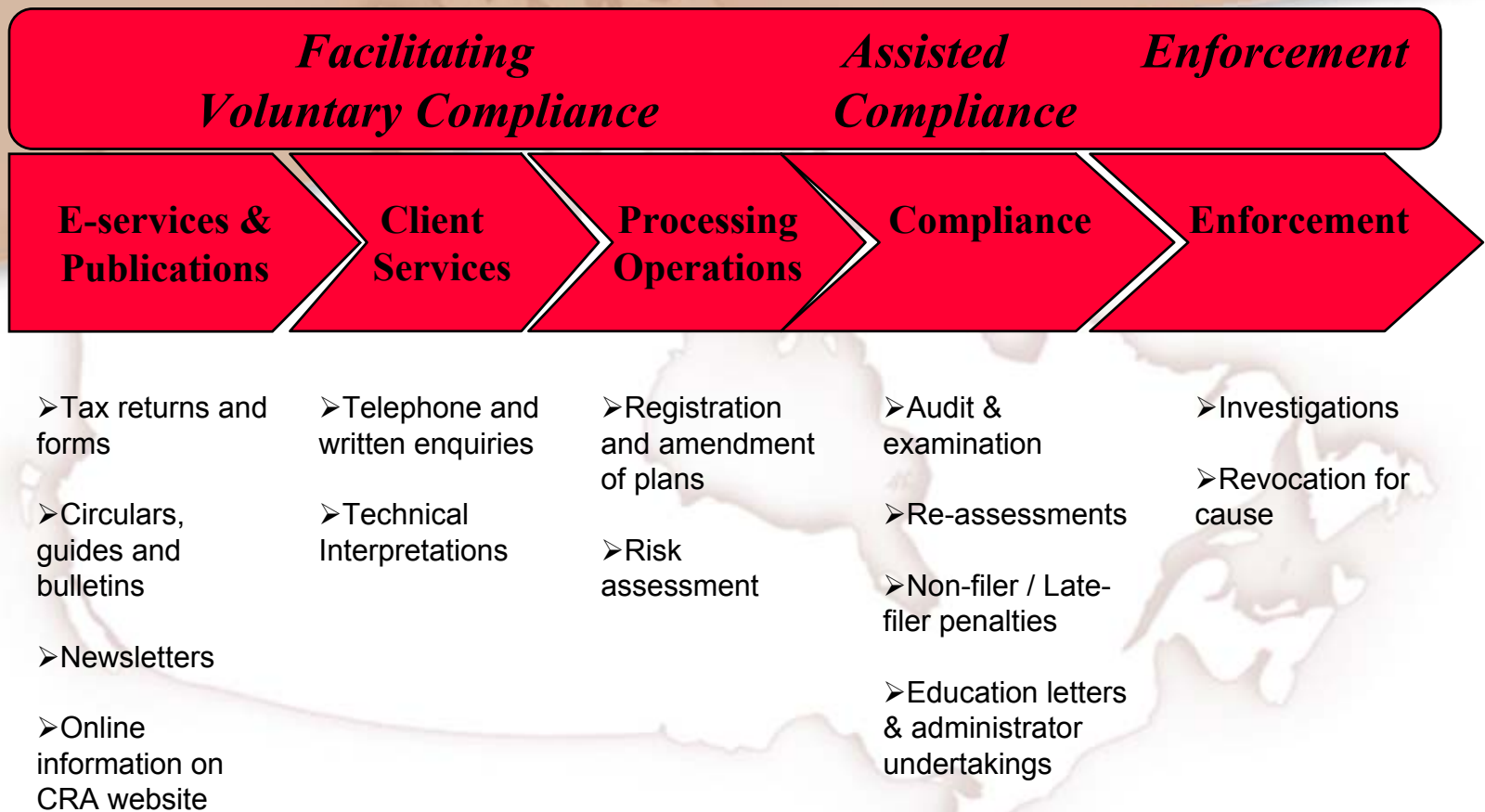
Role Of RPD

- **Registered pension plans**
- **Other deferred income plans**

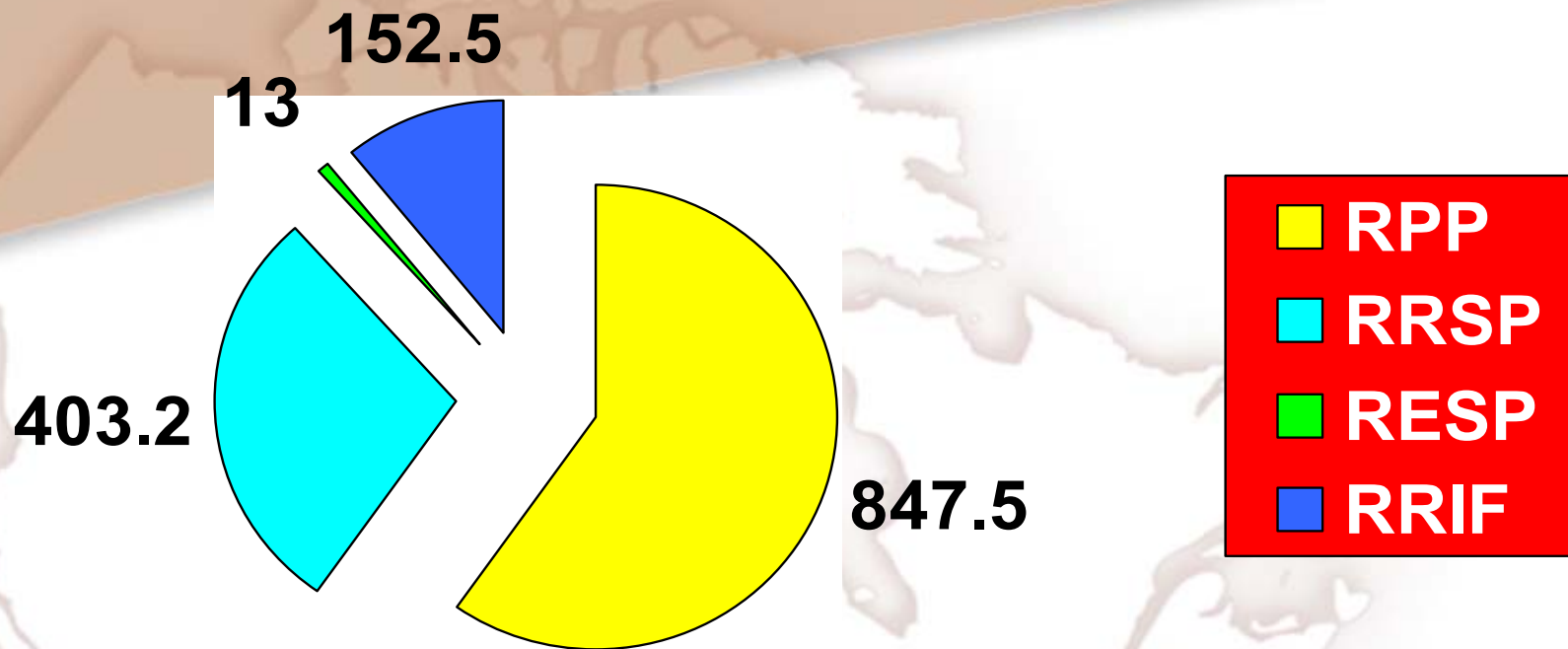
RPD – Organization Chart



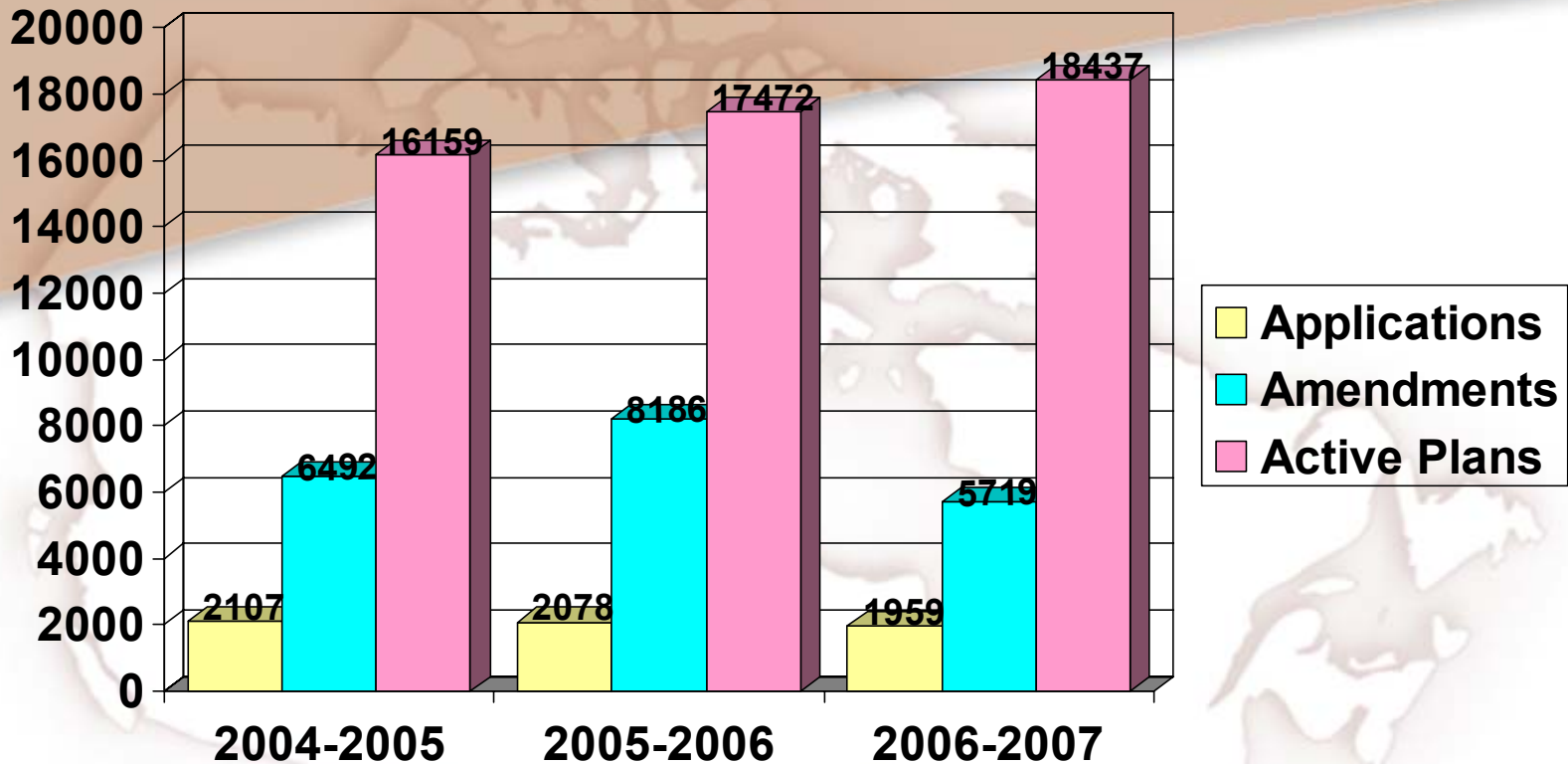
Compliance / Service Model



Asset Values Of Registered Plans 2003 (\$Billions)

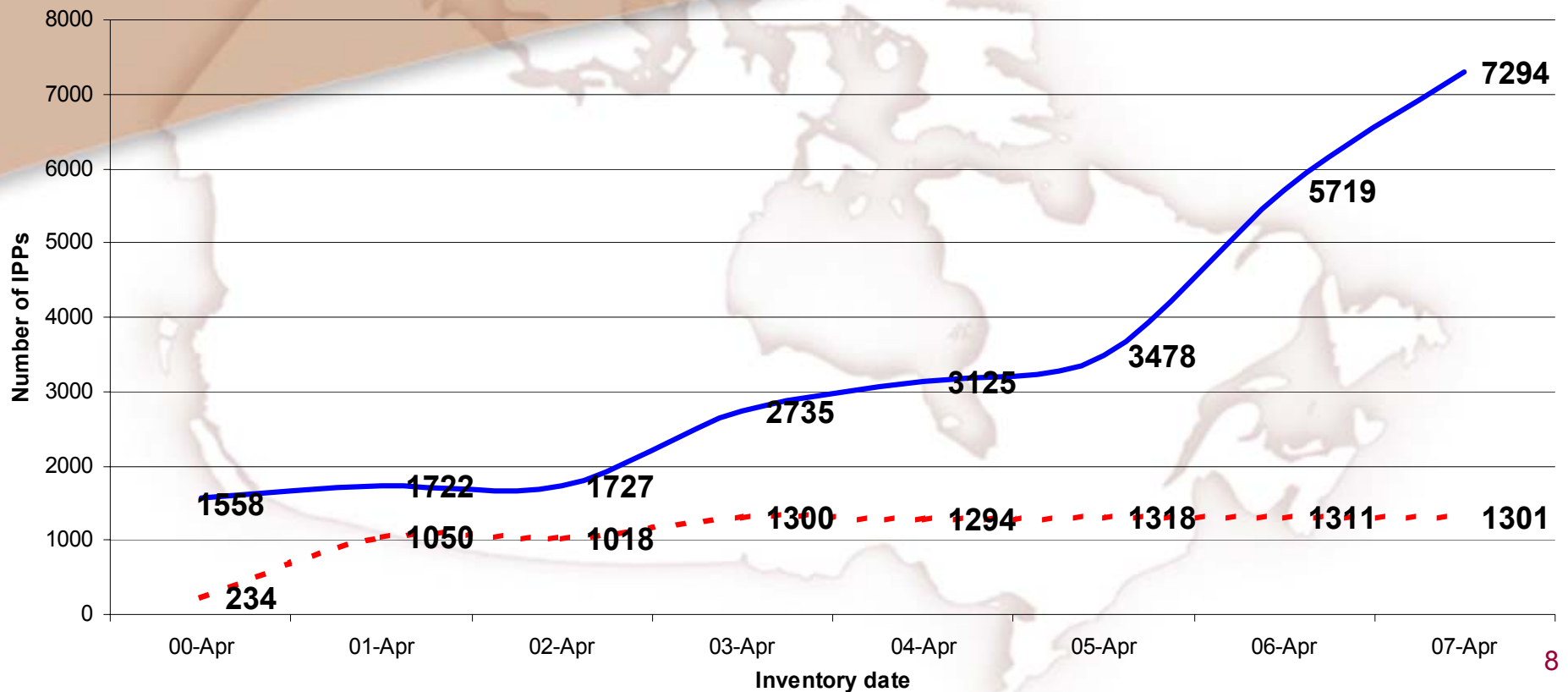


Registered Pension Plans Volumes

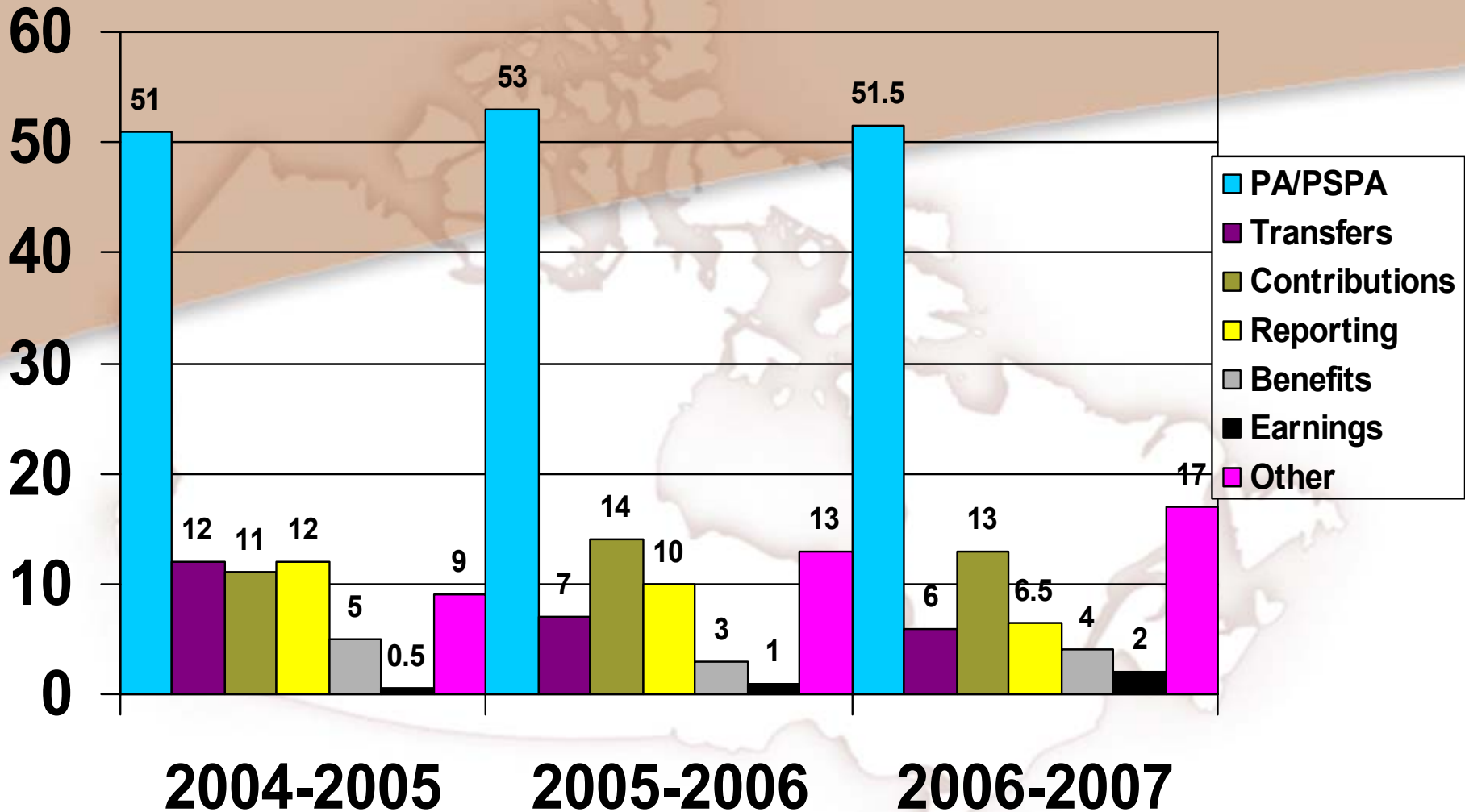


IPP Growth 2000 - 2007

DB (solid) / MP (dotted)



Non-Compliance Findings (%)



Program Overview

Pre-Reengineering

- **Concentration at registration and amendments stages**
- **Actuarial valuation report approvals**
- **Audit program**

Reengineered Program Registration and Amendments Change In focus

- **Reduced review of plan documents with the focus on risk management**
- **More intensive review of higher risk plans**
- **Actuarial Valuation Reports - Review and Approval**
- **Ongoing sampling of work to monitor risk indicators**

Reengineered Program Increasing Audit Presence

- **Regional**
 - Tax services offices' auditors
 - Fly-out teams
- **Headquarters**
 - Desk audits
 - Random sampling activities

Reengineered Program Expanding Outreach And Communication

- **Conferences and road shows**
- **More use of our Web site**
- **Other means of Information sharing and communication**

Reengineered Program Administrator Responsibilities

- **Self monitoring of Plan operations**
- **Timely and accurate submissions and reporting**
- **Communication with CRA when irregularities arise**



Questions??